



Mini Reese's Peanut Butter Cup Holder



All images © Stampin' Up!®

VIDEO TUTORIAL - <https://youtu.be/oKKw2t95Hzw>
 Order supplies at www.shoppingwithbarb.com

Supplies:

- Stamps: Welcome Easter (151559)
- Paper: Lovely Lipstick (146970), Pineapple Punch (146971), Whisper White (100730)
 Ink: Lovely Lipstick (147140), Basic Gray (149165), Pear Pizzazz (147104), Pool Party (147107), Stampin' Blends Markers Lovely Lipstick Light (147026), Pineapple Punch Dark (147030)
- Other: Sponge Daubers (133773), 1" Circle Punch (119868), 1 1/8" Scallop Punch (146138), Detailed Trio Punch (146320), Lovely Lipstick 1/8" Grosgrain Ribbon (146952), Trimmer (152392)

Cutting & Scoring:

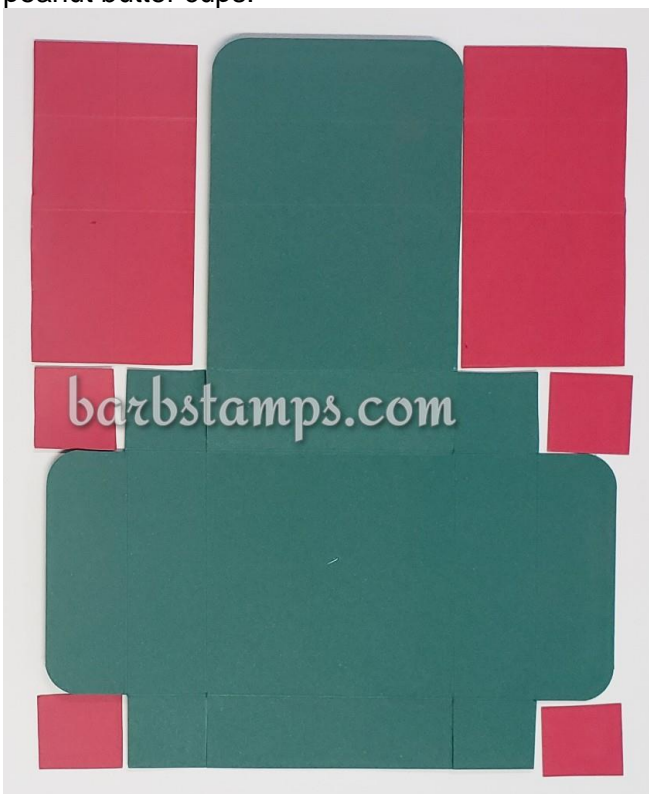
- Lovely Lipstick – 8 7/8" x 7", with long side at top of Trimmer, score at 1", 4", 5" and 8" with short side at top of Trimmer, score at 1", 2", 5" and 6"
- Lovely Lipstick – 3 3/4" square, score at 7/16" on all four sides

Instructions:

Use 1" circle punch to crop four holes in small square piece. Trim out the four corners and fold the edges.



Large piece – Fold on all score lines and trim out the red pieces as shown. Round the corners with the Detailed Trio Punch, add adhesive to the four small flaps and assemble the box. Add the insert and peanut butter cups.



To decorate the top, I used a layer of white that measures $2 \frac{5}{8}$ " and my layer of Pineapple Punch measures $2 \frac{3}{4}$ " square. I decorated the peanut butter cups with 1" circles of white and $1 \frac{1}{8}$ " scallop circles of Pineapple Punch.